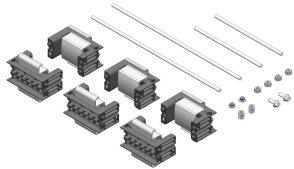


# NVENT ERIFLEX FLEXBUS SUPPORT KIT FLAT 3 POLES



## CERTIFICATIONS



## FEATURES

Adjustable clip adapts to support different conductor thicknesses

Strong, mechanical resistance and short-circuit tested as per IEC 61914 up to 67kA rms – 147kA Peak

Adjustable distance between each conductor (12,5 mm pitch)

Installation side-by-side or on top

For use with 3P configuration

Mounting options for ceiling or wall

Mounting options for different cable trays types

Mounting options for horizontal or vertical orientations

## SPECIFICATIONS

<b>Insulation Voltage</b>	1,000 VAC;1,500 VDC
<b>Dielectric Strength, UL</b>	1,500 VAC;1,500 VDC
<b>Dielectric Strength, IEC 61439.1</b>	3,500 VAC @ 1 min
<b>Finish</b>	Electrogalvanized
<b>Material</b>	Glass Fibre Reinforced Polyamide;Steel
<b>Complies With</b>	IEC® 60695-2-11 (Glow Wire Test 960 °C);IEC® 61439.1;IEC® 61914
<b>Halogen Free Rating</b>	IEC® 60754-1
<b>Low Smoke Rating</b>	ISO 5659-2

**Flammability Rating**

UL® 94V-0

**Working Temperature**

-40 to 266 °F

Catalog Number	Item Name	A	Depth(D)	Height(H)	Conductor Size	Unit Weight
FLEXSUPFLA50T	508105	3.445"	3.091"	4.705"	220 mm <sup>2</sup> , 360 mm <sup>2</sup> , 545 mm <sup>2</sup> , 640 mm <sup>2</sup>	2.862 lb
FLEXSUPFLA100T	508107	5.433"	3.091"	4.941"	960 mm <sup>2</sup> , 1280 mm <sup>2</sup> , 1810 mm <sup>2</sup>	4.321 lb

**Installation Standard**

AS 3008;BS 7671;CEI 64-8;CSN;DIN VDE 0100;HD 384;IEC® 60364;NBR 5410;NEN 1010;NFC 15-100;NIBT-NIN;NP (2002);ONORM;REBT;RGIE-AREI

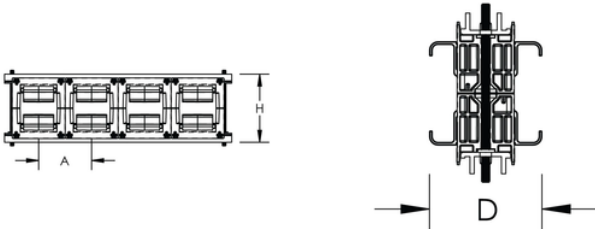
## ADDITIONAL PRODUCT DETAILS

Support kit and aluminum profile are sold separately.

When cable tray is used, we recommend installing a Flexbus Support at each extremity, in order to protect the Flexbus Conductor against potential sharp edges of the cable tray.

For ease of installation of the Flexbus Conductors on cable trays, we recommend using cantilever systems in order to have easy and direct access during installation phases.

## DIAGRAMS



## WARNING

nVent products shall be installed and used only as indicated in nVent's product instruction sheets and training materials. Instruction sheets are available at [www.nvent.com](http://www.nvent.com) and from your nVent customer service representative. Improper installation, misuse, misapplication or other failure to completely follow nVent's instructions and warnings may cause product malfunction, property damage, serious bodily injury and death and/or void your warranty.

**North America**

+1.800.753.9221

Option 1 – Customer Care

Option 2 – Technical Support

**Europe**

Netherlands:

+31 800-0200135

France:

+33 800 901 793

**Europe**

Germany:

800 1890272

Other Countries:

+31 13 5835404

**APAC**

Shanghai:

+ 86 21 2412 1618/19

Sydney:

+61 2 9751 8500



Our powerful portfolio of brands:  
**nVent.com CADDY ERICO HOFFMAN RAYCHEM SCHROFF**  
**TRACER**